



Profit from the Eagle Advantage®

Specification Sheet

Item No.: _____
 Project No.: _____
 S.I.S. No.: _____

Catalog Specification Sheet No. **EG01.03C**

Wire Shelving Components and Accessories—Slides, Tote Boxes



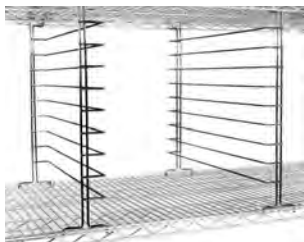
adjustable undershelf slides with tote box



one-piece slide with tote box



slide system with tote boxes



tray slides

MODELS:

- | | | | |
|--|---|---|---------------------------------------|
| <input type="checkbox"/> US*-S | <input type="checkbox"/> TS1417 | <input type="checkbox"/> HDTS24* | <input type="checkbox"/> A203* |
| <input type="checkbox"/> OUS* | <input type="checkbox"/> TS2517 | <input type="checkbox"/> A2085* | <input type="checkbox"/> A217* |
| <input type="checkbox"/> USS*-S | <input type="checkbox"/> TS18* | <input type="checkbox"/> TB1016* | |
| <input type="checkbox"/> TS1421 | <input type="checkbox"/> TS24* | <input type="checkbox"/> TB1022* | |
| <input type="checkbox"/> TS2021 | <input type="checkbox"/> HDTS18* | <input type="checkbox"/> TB1722* | |

* See charts for complete model numbers.

Undershelf Slides

**ADJUSTABLE *
UNDERSHELF SLIDES**
Stainless steel. Accepts any tote box widths.

**ONE-PIECE *
SLIDES**
Easily attaches to front and rear of shelf.

**SLIDES WITH *
END MOUNT**
Allows totes to be removed from the end.

ADJUSTABLE * UNDERSHELF SLIDES			ONE-PIECE * SLIDES			SLIDES WITH * END MOUNT			fits shelf width	
model #	weight lbs.	kg	model #	weight lbs.	kg	model #	weight lbs.	kg	in.	mm
US18-S	3	1.4	OUS18	6	2.7		n/a		18"	457
US21-S	3	1.4	OUS21	8	3.6		n/a		21"	533
US24-S	3	1.4	OUS24	9	4.1	USS24-S	3	1.4	24"	610
US30-S	4	1.8		n/a		USS30-S	4	1.8	30"	762

Slide Systems *

Easily attaches to underside of shelf without the use of tools.

model #	width in.	mm	length in.	mm	depth in.	mm	fits shelf in.	mm	adaptable tote boxes (see back page)	weight lbs.	kg
TS1421	21 ⁵ / ₈ "	683	14"	356	10 ¹ / ₄ "	260	24"	610	TB1022-3, TB1022-6	5.0	2.3
TS2021	21 ⁵ / ₈ "	683	20"	508	10 ¹ / ₄ "	260	24"	610	TB1722-3, TB1722-6, TB1722-9	7.5	3.4
TS1417	17 ¹ / ₂ "	543	14"	356	10 ¹ / ₄ "	260	21"	533	TB1016-3, TB1016-6	4.0	1.8
TS2517	17 ¹ / ₂ "	543	25 ¹ / ₂ "	797	10 ¹ / ₄ "	260	21"	533	TB1722-3**, TB1722-6**, TB1722-9**	5.0	2.3

** Fits TS2517 sideways

Tray Slides

Maximizes your use of space between shelves. Available in chrome or epoxy. 1¹/₄" (45mm) spacing.

STANDARD Holds 9 trays.				HEAVY DUTY Holds 11 trays. Features panel assembly welded to the back of slides					
chrome model #	EAGLEgard® model #	weight lbs.	kg	chrome model #	EAGLEgard® model #	weight lbs.	kg	width in.	height in.
TS18-C	TS18-E	9	4.1	HDTS18-C	HDTS18-E	12	5.4	17 ¹ / ₂ "	22"
TS24-C	TS24-E	11	5.0	HDTS24-C	HDTS24-E	15	6.8	23 ¹ / ₂ "	22"

* A variety of tote boxes are available for use with these slides and slide systems. See back page.

EAGLE GROUP
 100 Industrial Boulevard, Clayton, DE 19938-8903 USA
 Phone: 302-653-3000 • Fax: 302-653-2065
 www.eaglegrp.com

Foodservice Division: Phone 800-441-8440
 MHC/Retail Display Divisions: Phone 800-637-5100

For custom configuration or fabrication needs, contact our **SpecFAB®** Division.
 Phone: 302-653-3000 • Fax: 302-653-2065 • e-mail: quotes@eaglegrp.com

AUTOQUOTES



EG01.03C Rev. 12/14

Spec sheets available for viewing, printing or downloading from our online literature library at www.eaglegrp.com

Wire Shelving Components and Accessories—Slides, Tote Boxes



Item No.: _____
 Project No.: _____
 S.I.S. No.: _____

Wire Shelving Slides & Tote Boxes



assorted molded fiberglass boxes and trays

Molded Fiberglass Boxes and Trays

Boxes are stackable for maximum storage efficiency. Made of thermoset polyester composite material. Flame and chemical resistant.

model #	description	inside dimensions				outside dimensions				depth	
		width		length		width		length			
		in.	mm	in.	mm	in.	mm	in.	mm	in.	mm
A208505	tray	16 $\frac{1}{4}$ "	412	24 $\frac{3}{8}$ "	619	17 $\frac{1}{8}$ "	454	25 $\frac{1}{4}$ "	654	1"	25
A208506	stacking box	15 $\frac{1}{8}$ "	403	23 $\frac{1}{8}$ "	606	17 $\frac{1}{4}$ "	451	25 $\frac{1}{4}$ "	654	3"	76
A208507	stacking box	15 $\frac{1}{8}$ "	403	23 $\frac{3}{8}$ "	606	17 $\frac{1}{4}$ "	451	25 $\frac{1}{4}$ "	654	4 $\frac{1}{2}$ "	114
A208508	stacking box	15 $\frac{1}{8}$ "	403	23 $\frac{1}{8}$ "	606	17 $\frac{1}{4}$ "	451	25 $\frac{1}{4}$ "	654	6"	152
A208513*	lid	—	—	—	—	17 $\frac{1}{4}$ "	451	25 $\frac{1}{4}$ "	654	—	—

*Model #A208513 lid fits models A208506, A208507, and A208508 stacking boxes.



TB1016 and TB1722 series

Tote Boxes

Injection molded from high-density polyethylene material for uniformed wall thickness ensures impact resistance and durability. Also available in molded fiberglass (see bottom of this page).

color	model #	width		length		depth		weight		fits Slide System (see previous page)
		in.	mm	in.	mm	in.	mm	lbs.	kg	
grey	TB1016-3	10 $\frac{1}{8}$ "	276	16 $\frac{1}{2}$ "	419	3 $\frac{1}{2}$ "	89	1.0	0.5	TS1417
	TB1016-6	10 $\frac{1}{8}$ "	276	16 $\frac{1}{2}$ "	419	6"	152	1.5	0.7	TS1417
grey	TB1722-3*	17 $\frac{1}{2}$ "	444	22 $\frac{1}{2}$ "	572	3"	76	2.3	1.0	TS2021, TS2517
	TB1722-6*	17 $\frac{1}{2}$ "	444	22 $\frac{1}{2}$ "	572	6"	152	3.5	1.6	TS2021, TS2517
	TB1722-9*	17 $\frac{1}{2}$ "	444	22 $\frac{1}{2}$ "	572	8"	203	4.0	1.8	TS2021, TS2517
white	TB1022-3	11"	279	22 $\frac{1}{2}$ "	572	3"	76	1.5	0.7	TS1421, TS2517
	TB1022-6	11"	279	22 $\frac{1}{2}$ "	572	5 $\frac{3}{4}$ "	146	2.0	0.9	TS1421, TS2517

* Fits Slide System #TS2517 sideways



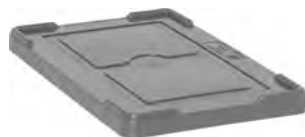
TB1022 series

Tote Box Accessories



tote box dividers

color	LONG DIVIDERS			SHORT DIVIDERS			COVERS		fits tote box #
	model #	maximum number accepted		model #	maximum number accepted		model #		
grey	A217766	7		A217760	11		A217765		TB1016-3
	A203841	7		A203843	11		A217765		TB1016-6
grey	A217763	11		A217764	15		A217638		TB1722-3
	A203842	11		A203844	15		A217638		TB1722-6
	A203845	11		A203846	15		A217638		TB1722-9
white	A203838	7		A203839	15		A203874		TB1022-3
	A217759	7		A217791	15		A203874		TB1022-6



tote box cover (for TB1016 and TB1722 series)



card holder

CARD HOLDERS

Clear vinyl, with velcro fasteners.

model #	holds labels	
	inches	mm
CH28	2" x 8"	51 x 203
CH35	3" x 5"	76 x 127
CH58	5" x 8"	127 x 203

EAGLE GROUP
 100 Industrial Boulevard, Clayton, DE 19938-8903 USA
 Phone: 302-653-3000 • Fax: 302-653-2065
 www.eaglegrp.com

Foodservice Division: Phone 800-441-8440
 MHC/Retail Display Divisions: Phone 800-637-5100

Printed in U.S.A.
 ©2014 by Eagle Group

Rev. 12/14

Spec sheets available for viewing, printing or downloading from our online literature library at www.eaglegrp.com

Although every attempt has been made to ensure the accuracy of the information provided, we cannot be held responsible for typographical or printing errors. Information and specifications are subject to change without notice. Please confirm at time of order.