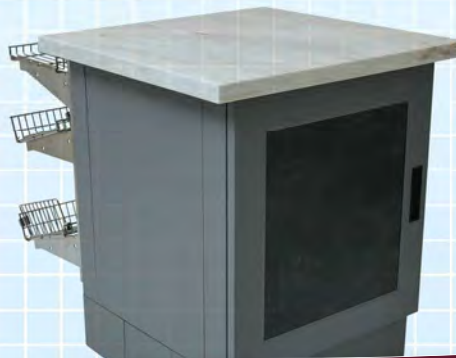
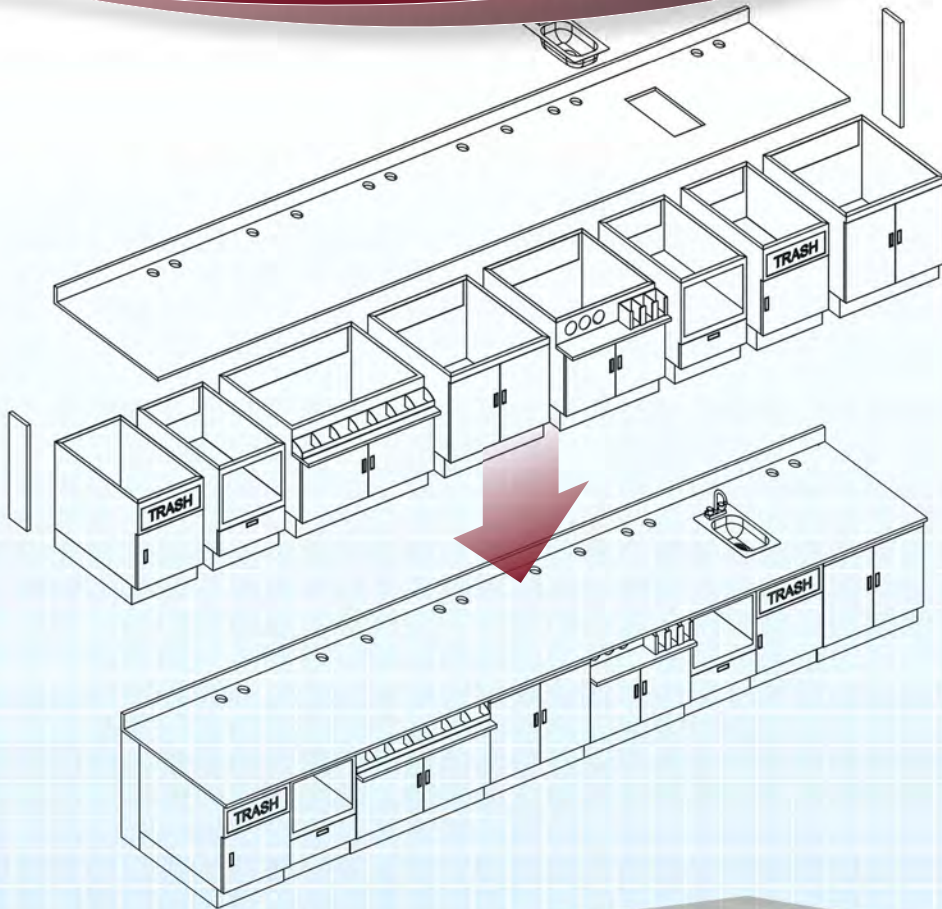


# Convenience Store Modular Metal Cabinets



## Features on all cabinets

**Cabinet construction:** Powder-coated galvanized steel cabinet. Color per customer requirements (optional stainless steel and millwork available). Top overhang creates utility chase at rear. Back panel with opening to chase area. 6"-tall curb base with toe-kick and leveling feet. Optional adjustable stainless steel legs/feet available. Optional casters available. Access to inside of curb base from inside by removable bottom panel. Accommodates adjustable merchandiser shelves.

**Door construction:** Hinged door with recessed plastic pull and magnetic catch (two doors on units 30" and longer). Options for doors include keyed locks, perforations and louvers. Custom door options: Plastic laminates, solid materials, and wood; various colors and pulls; and vinyl wrapping.

**Top options available (tops made to order):** Beverage trough with drain; plastic laminates; stainless steel; solid surface materials; stone; powder-coated steel.

**Cabinet dimensions:** 18", 24", and 30" depths (front-to-back); 12", 18", 24", 30", 36", and 48" lengths (end-to-end), except where noted; 26", 33", and 40" heights (without top, with adjustment feet screwed fully into unit).

## Cabinets

### Tall Door Base Units

- Full-height doors to maximize storage space.
- One adjustable center shelf.

### Beverage Units

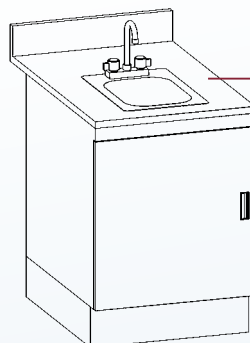
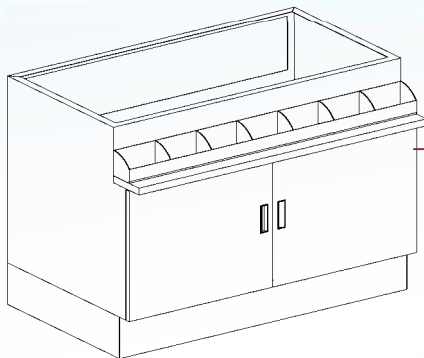
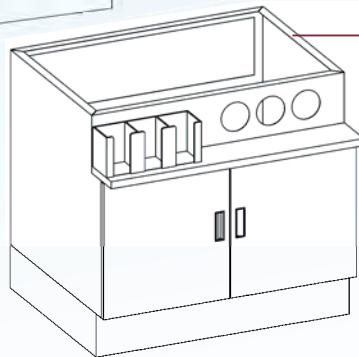
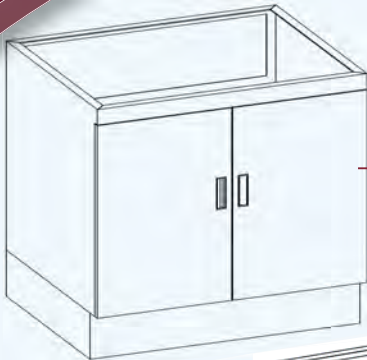
- Recessed area with stainless ledge for cup dispensers (dispensers sold separately). Dispensers accommodate cup sizes from 8 to 46 ounces.
- One adjustable center shelf.
- Optional condiment trays available.
- Optional lid holders available.

### Condiment Units

- Recessed area with stainless ledge for condiment trays.
- Condiment trays 6" deep. Includes adjustable dividers for differing sized condiments. Trays available in 12", 24", and 36" lengths.
- One adjustable center shelf.

### Sink Units

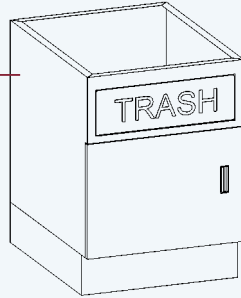
- Open back panel.
- Partial removable bottom panel for plumbing access.
- 10" x 14" x 5" self-rimming sink provided.
- 1½" basket drain provided.
- Deck-mounted faucet provided. Options available include electric-eye, wrist handles, soap dispenser, and towel dispenser.



# Cabinets (continued)

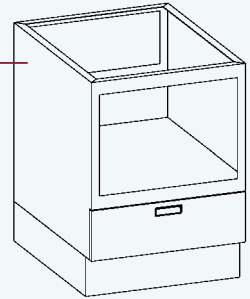
## Waste Units

- 12", 18", and 24" lengths.
- Full back panel.
- Removable bottom panel.
- One door and trash flap.
- One trash bin included.



## Microwave Units

- Able to hold microwave 21" L x 20" D x 17" H.
- One storage drawer. Optional lock available.

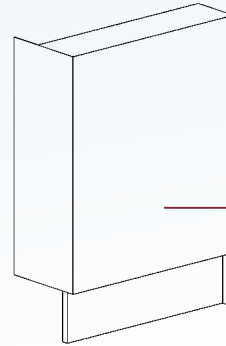


## Filler Panels



### Adjustable Filler Panel

- Used at front to fill odd sized spaces left from standard cabinet lengths.
- Cut to size in field.
- Adjustable from 2" to 12".



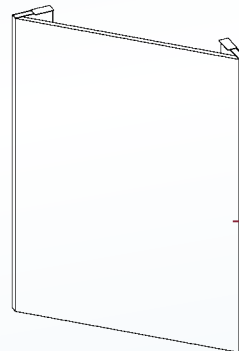
### Inside 90° Corner Filler Panel

- Attaches 2-bases.
- Fills base and cabinet spaces.



### Inside 45° Corner Filler Panel

- Attaches 2-bases.
- Fills base and cabinet spaces.

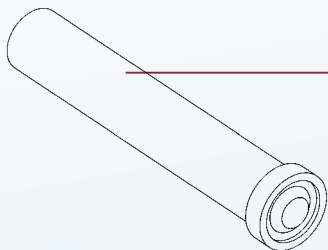


### Outside 45° Corner Filler Panel

- Solid powder coated steel.
- Stainless steel.

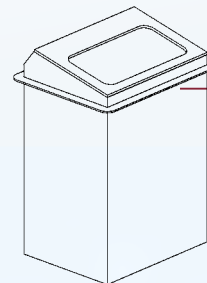
More Filler Panels on back page ►

## Accessories



### Cup Dispenser

- Adjustable for a wide variety of cup sizes without tools.



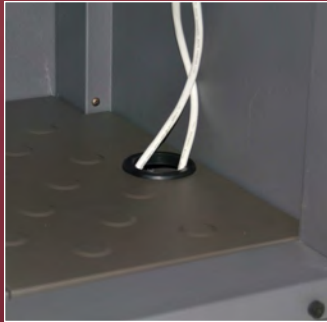
### Napkin Dispenser

- Easily converts from full-fold to interfold napkins.
- 750 napkin capacity.



# Details in the design...

## Standard Features



Shelf Cutouts



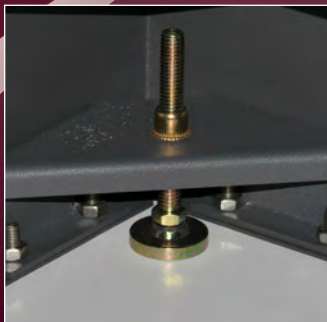
Back Filler Panel



Removable Bottom Shelves



Adjustable Shelves\*



Leveling Feet



Base Utility Chase

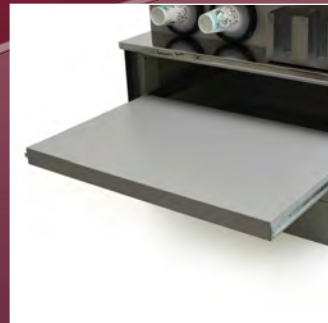
## Options/Accessories



End Filler Panels



Cup Dispensers



Pull-out Shelves



Merchandise Shelving



Condiment Holder



Lid Holder

\* where applicable



**Eagle Group**  
100 Industrial Blvd.  
Clayton, DE 19938

Toll Free:  
1-800-441-8440 (FDSRV)  
1-800-637-5100 (MHC)

Fax: 302-653-2065

[www.eaglegrp.com](http://www.eaglegrp.com)

## How to Request a Quote?

- Quotation request get emailed to [quotes@eaglegrp.com](mailto:quotes@eaglegrp.com)
- Fax 302-653-3091 to...

Eagle Group  
Attn: SpecFAB Quote Department  
100 Industrial Blvd  
Clayton, DE 19938

## What to include with your request...

- Your name and dealer name
- Job or project name
- Required date for quote
- Bid date for project
- Projected installation date and timeline
- Consultant name when applicable
- Plans and specifications related to the project
- Special considerations

**EAGLE**  
**GROUP**  
Profit from the Eagle Advantage®

EG7013 Rev. 03/17